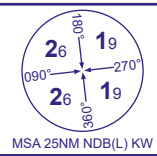


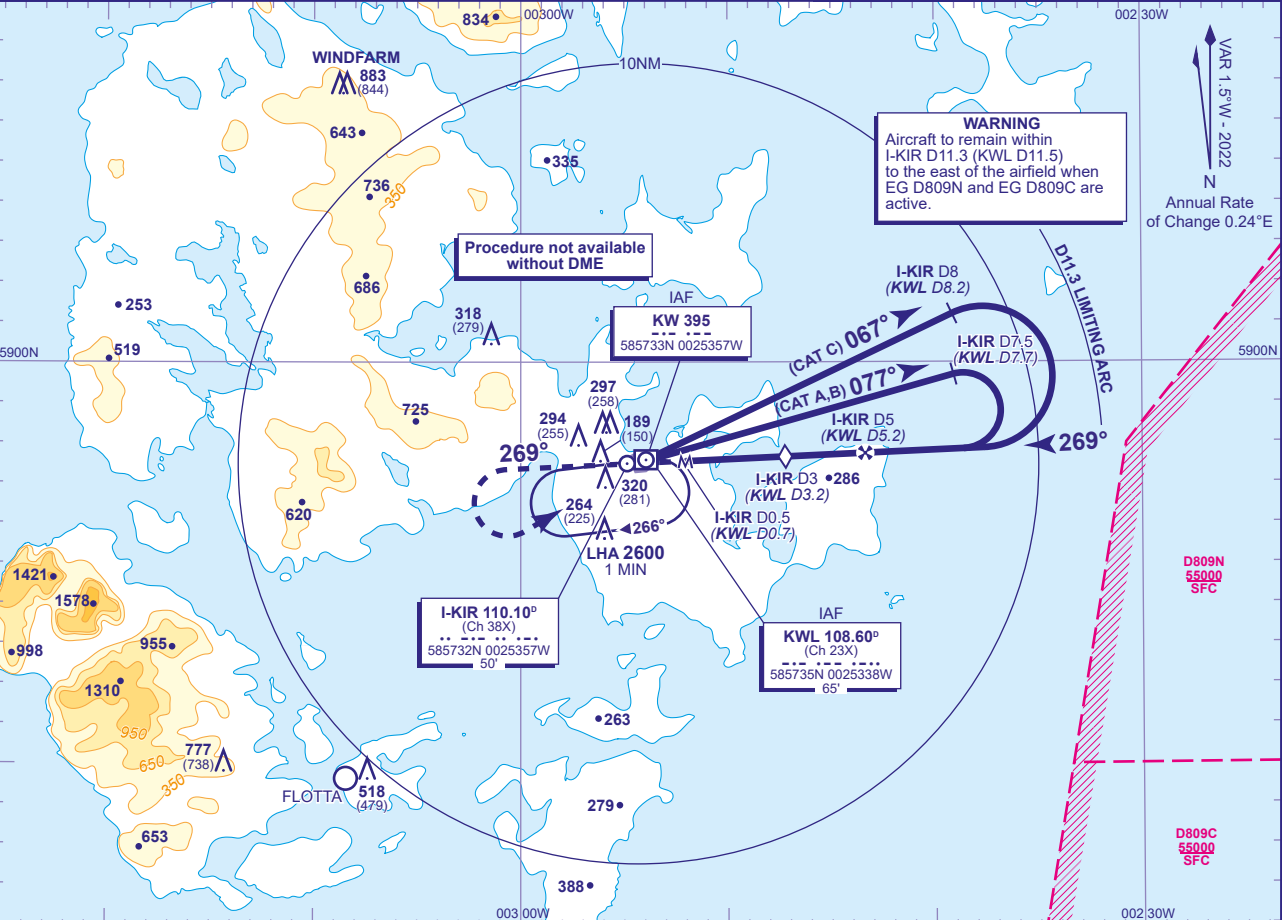
INSTRUMENT APPROACH CHART - ICAO

KIRKWALL
NDB(L)/DME
RWY 27
(ACFT CAT A,B,C)



APP	118.305	KIRKWALL APPROACH	AD ELEVATION	58
TWR	118.305	KIRKWALL TOWER	THR ELEVATION	39
AFIS	118.305	KIRKWALL INFORMATION	OBSTACLE ELEVATION	883 AMSL (844) (ABOVE THR)
ATIS	108.600	KIRKWALL INFORMATION	BEARINGS ARE MAGNETIC	

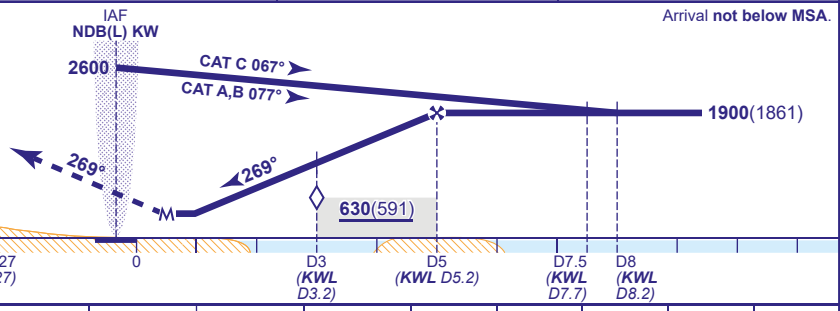
TRANSITION ALTITUDE
3000



RECOMMENDED PROFILE Gradient 6.1%, 370FT/NM

DME I-KIR(KWL)	4(4.2)	3(3.2) (SDF)	2(2.2)	1(1.2)
ALT(HGT)	1540(1501)	1180(1141)	810(771)	460(421)

MAPt I-KIR DME 0.5
(KWL DME 0.7)
Climb straight ahead. At 2000 or, I-KIR DME 3 (KWL DME 3.5) whichever is later, climbing turn left to return to NDB(L) KW at 2600 or as directed.



Aircraft Category		A	B	C	Rate of descent	G/S KT	160	140	120	100	80
OCA (OCH)	Procedure	450(411)	450(411)	450(411)		FT/MIN	990	870	740	620	500
VM(C)OCA (OCH AAL)	Total Area	650(592)	660(602)	1250(1192)							
	South of RWY 09/27	650(592)	660(602)	760(702)							

NOTE FAT is parallel to RWY C/L but offset 136 metres north.

CHANGE (8/21): I-KIR DME ELEVATION. MAG VAR. MAG TRACKS. OBSTACLES.